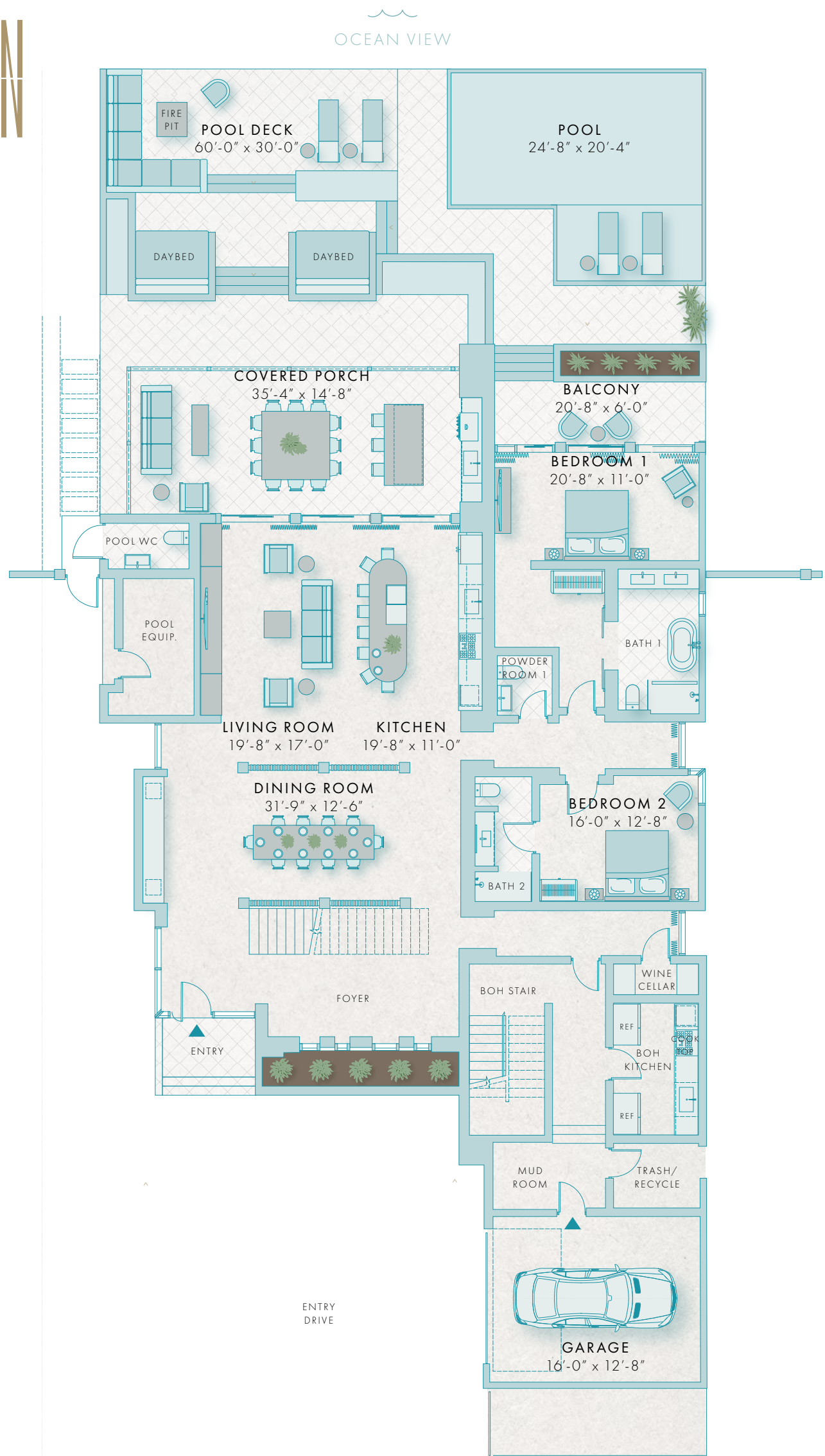


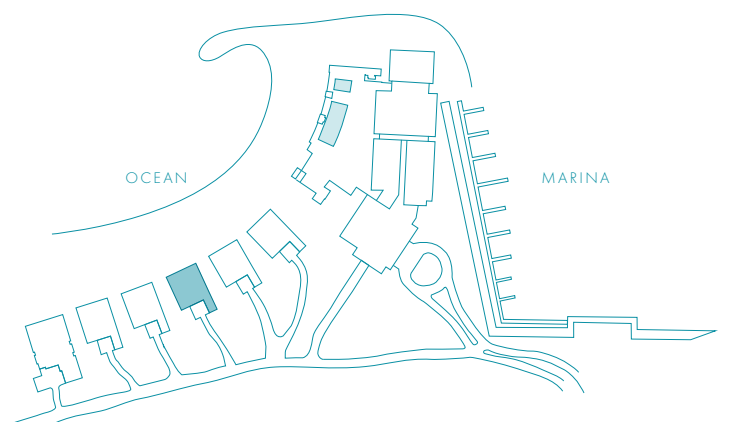
THE
LOREN
AT TURTLE COVE
—
RESIDENCES



VILLA 4 LEVEL 1

OCEAN VIEW
5 BEDROOMS
9 BATHROOMS
INTERIOR: 5962 SQ FT
COVERED EXTERIOR: 1601 SQ FT
EXTERIOR PATIO: 1873 SQ FT
TOTALS: 9436 SQ FT

SOUTH VIEW



THE LOREN AT
TURTLE COVE RESIDENCES

TURTLE COVE
THE TURKS & CAICOS ISLANDS

CHRISTIE'S
INTERNATIONAL REAL ESTATE

Floor plans are not to scale, dimensions are approximate, and may vary from the description of the unit in the condominium declaration and the purchase contract. Floor plans, including room layouts and the configuration and location of appliances, cabinets, closets, plumbing facilities, and other improvements shown within the unit are subject to change. Please review the condominium declaration and purchase contract for a description of how the units are measured. You should review the actual materials prior to making any finish or upgrade selections.

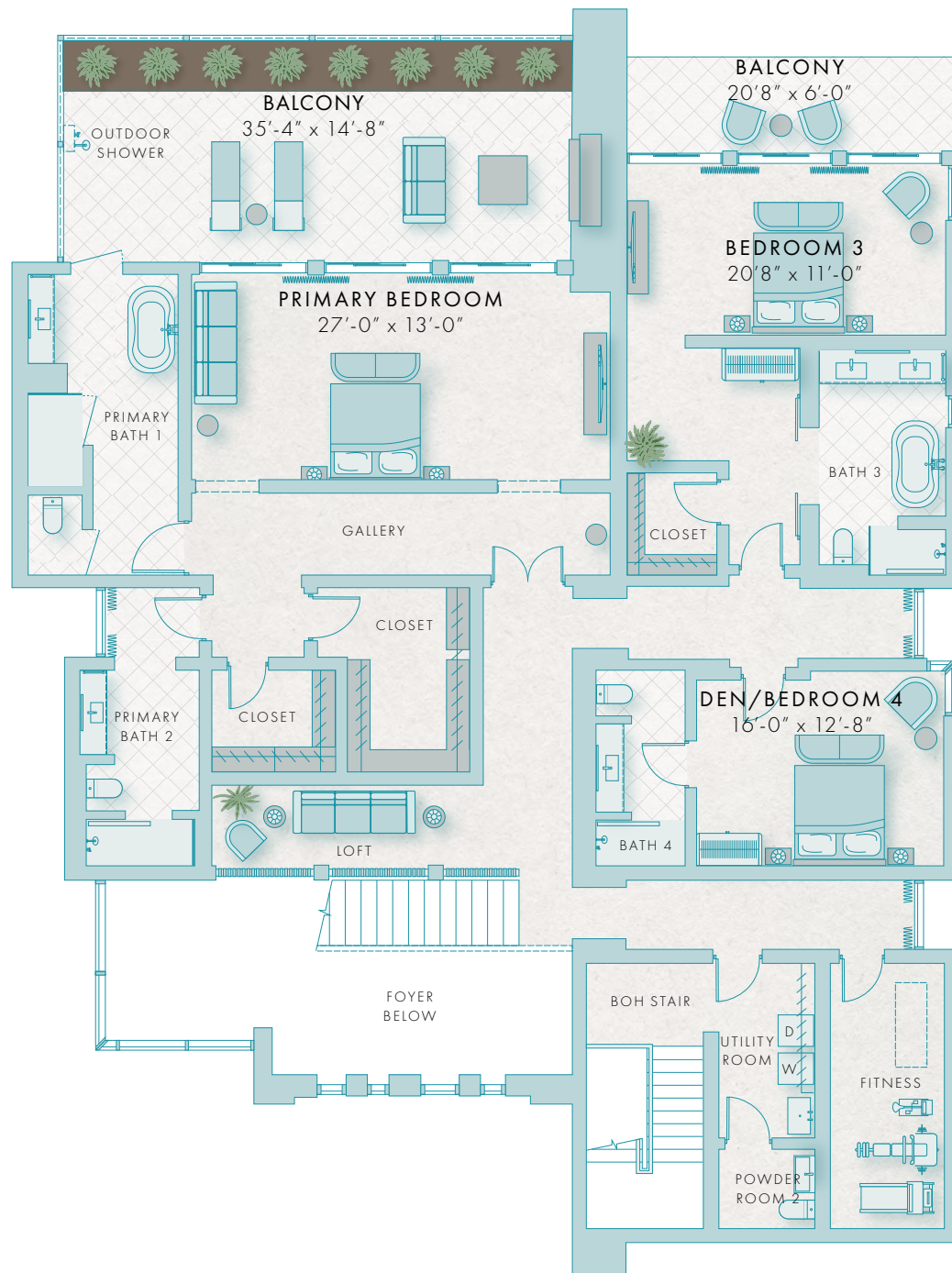


THE LOREN

AT TURTLE COVE

RESIDENCES

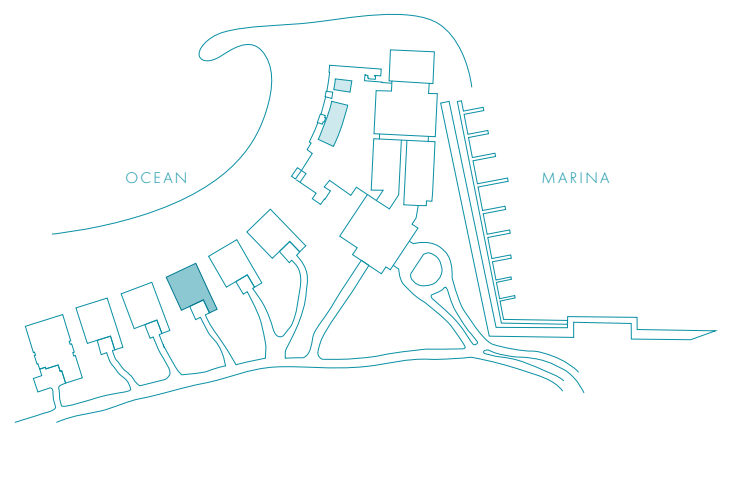
OCEAN VIEW



SOUTH VIEW

VILLA 4 LEVEL 2

OCEAN VIEW
5 BEDROOMS
9 BATHROOMS
INTERIOR: 5962 SQ FT
COVERED EXTERIOR: 1601 SQ FT
EXTERIOR PATIO: 1873 SQ FT
TOTALS: 9436 SQ FT



THE LOREN AT
TURTLE COVE RESIDENCES

TURTLE COVE
THE TURKS & CAICOS ISLANDS

CHRISTIE'S
INTERNATIONAL REAL ESTATE

Floor plans are not to scale, dimensions are approximate, and may vary from the description of the unit in the condominium declaration and the purchase contract. Floor plans, including room layouts and the configuration and location of appliances, cabinets, closets, plumbing facilities, and other improvements shown within the unit are subject to change. Please review the condominium declaration and purchase contract for a description of how the units are measured. You should review the actual materials prior to making any finish or upgrade selections.

